



IFB FQ18064

**Rehabilitation of WMATA Parking Garages at
Largo Town Center North, Largo town Center South, New
Carrollton, Vienna North, West Falls Church and White Flint**

**Pre Bid Conference
JGB Room 306 Bus Conference Room
April 26, 2018 at 11:00 am**



FQ18064 – Rehabilitation of Parking Garages at Largo Town Center North, Largo Town center South, New Carrollton, Vienna North, West Falls Church and White Flint



Topics of Discussion

- General Information
- Six Parking Garages Location and Description
 - Largo Center North
 - Largo Center South
 - New Carrollton
 - Vienna North
 - West Falls Church
 - White Flint
- Typical Rehabilitation Requirements
 - Typical Expansion Joint to Be Repaired
 - Typical Construction Joint to Be Repaired
 - Typical Concrete Cracks to Be Repaired
 - Typical Traffic Bearing Membrane
- Program Schedule Requirements
- Site Visit

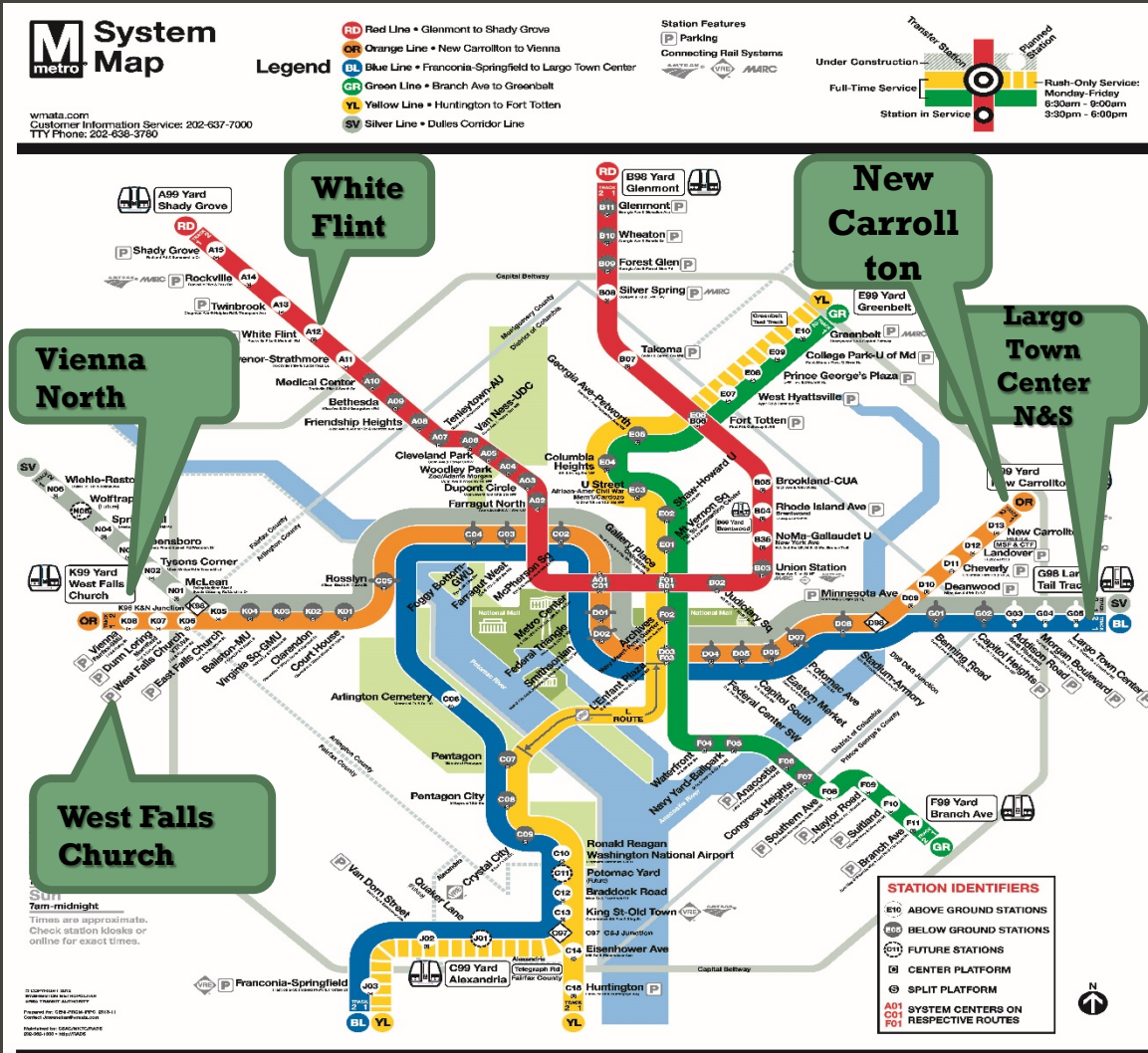


General Information

- The Washington Metropolitan Area Transit Authority (WMATA) Parking Garages at Largo Town Center North, Largo Town Center South, New Carrollton, Vienna North, West Falls Church and White Flint are Six active commuter parking garages that serve the Washington DC Metro area stations along the A,D, G, and K lines.
- All Six (6) parking garages share similar construction consisting of Pre-tensioned precast concrete double tee beams supported by inverted tee girders and precast columns.
- Commuter garages have a high occupancy rate during normal business hours, Monday through Friday.
- Occupancy rates are lower during the weekends and holidays.



FQ18064 – Rehabilitation of Parking Garages at Largo Town Center North, Largo Town Center South, New Carrollton, Vienna North, West Falls Church and White Flint





FQ18064 – Rehabilitation of Parking Garages at Largo Town Center North, Largo town center South, New Carrollton, Vienna North, West Falls Church and White Flint



wmata.com
Customer Information Service: 202-637-7000
TTY Phone: 202-638-3780

Legend

- RD Red Line • Glenmont to Shady Grove
- OR Orange Line • New Carrollton to Vienna
- BL Blue Line • Franconia-Springfield to Largo Town Center
- GR Green Line • Branch Ave to Greenbelt
- YL Yellow Line • Huntington to Fort Totten
- SV Silver Line • Dulles Corridor Line

Station Features
P Parking
Connecting Rail Systems
AMTDC CTRC MARC



Largo Town Center N & S Parking Garage

- Located at 701 Harry S. Truman Drive, Upper Marlboro, MD 20774. 8900 Lottsford Drive, Upper Marlboro, MD 20774
- The parking garage serves the Largo Metro Station located on the Blue & silver line.
- The north parking structure consists of a ground level and six (6) elevated levels. The south parking structure consists of a ground level and five (5) elevated levels of car parking, having approx. 262,000 sf
- The South parking garage has an area of approximately 630,990 sf. Both garages were constructed in 2006.



FQ18064 – Rehabilitation of Parking Garages at Largo Town Center North, Largo Town Center South, New Carrollton, Vienna North, West Falls Church and White Flint



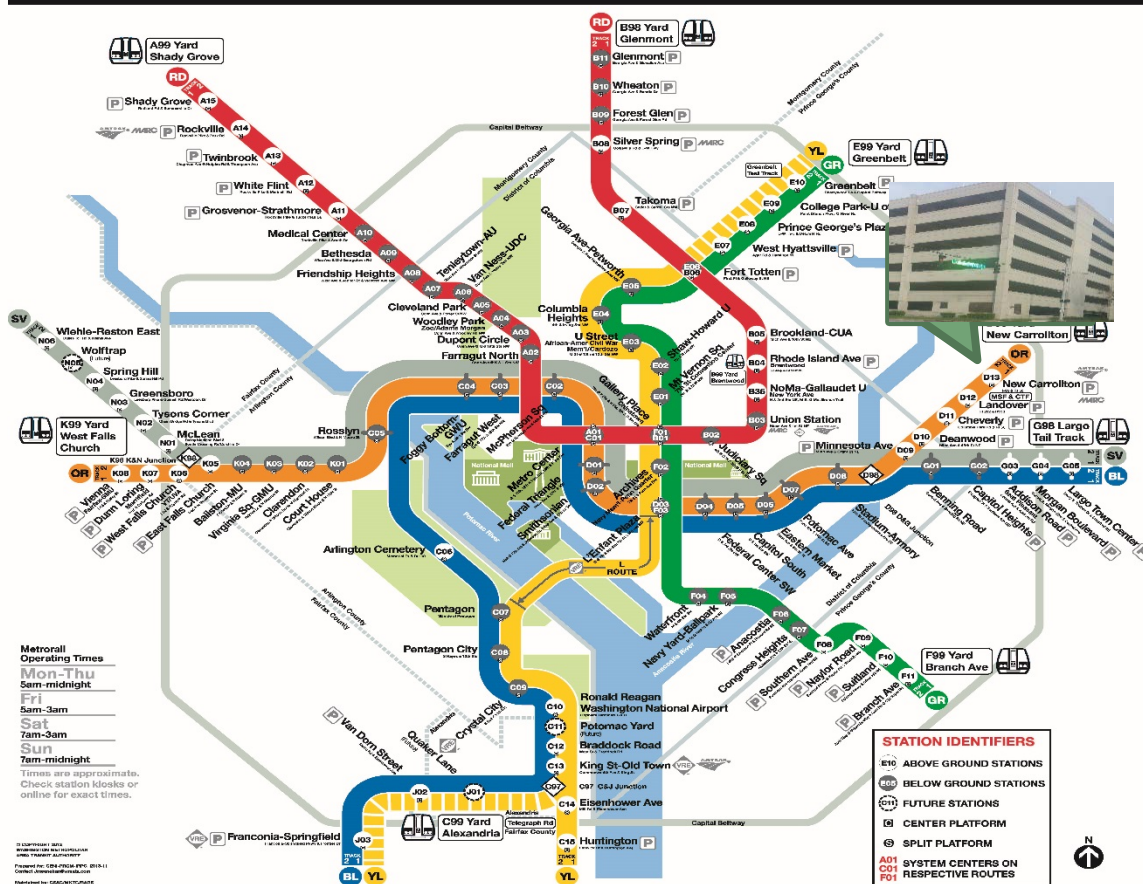
WMATA.com
Customer Information Service: 202-637-7000
TTY Phone: 202-636-3760

Legend

- Red Line • Glenmont to Shady Grove
- Orange Line • New Carrollton to Vienna
- Blue Line • Franconia-Springfield to Largo Town Center
- Green Line • Branch Ave to Greenbelt
- Yellow Line • Huntington to Fort Totten
- Silver Line • Dulles Corridor Line

Station Features
P Parking
Connecting Rail Systems
AMARC
MDOT
VIA

Under Construction
Full-Time Service
Station in Service
Transfer Station
Planned Station
Rush-Only Service:
Monday-Friday
6:30am - 9:00am
3:30pm - 6:00pm



New Carrollton Parking Garage

- Located on 4700 Garden City Drive, Hyattsville, MD 20785, Prince George's County
- The parking Garage serves Metro Station located on the Orange line.
- The Garage structure consist of a ground level and seven (7) elevated levels of car parking.
- The parking garage has an approx.. area of 592,000sf.



FQ18064 – Rehabilitation of Parking Garages at Largo Town Center North, Largo Town Center South, New Carrollton, Vienna North, West Falls Church and White Flint

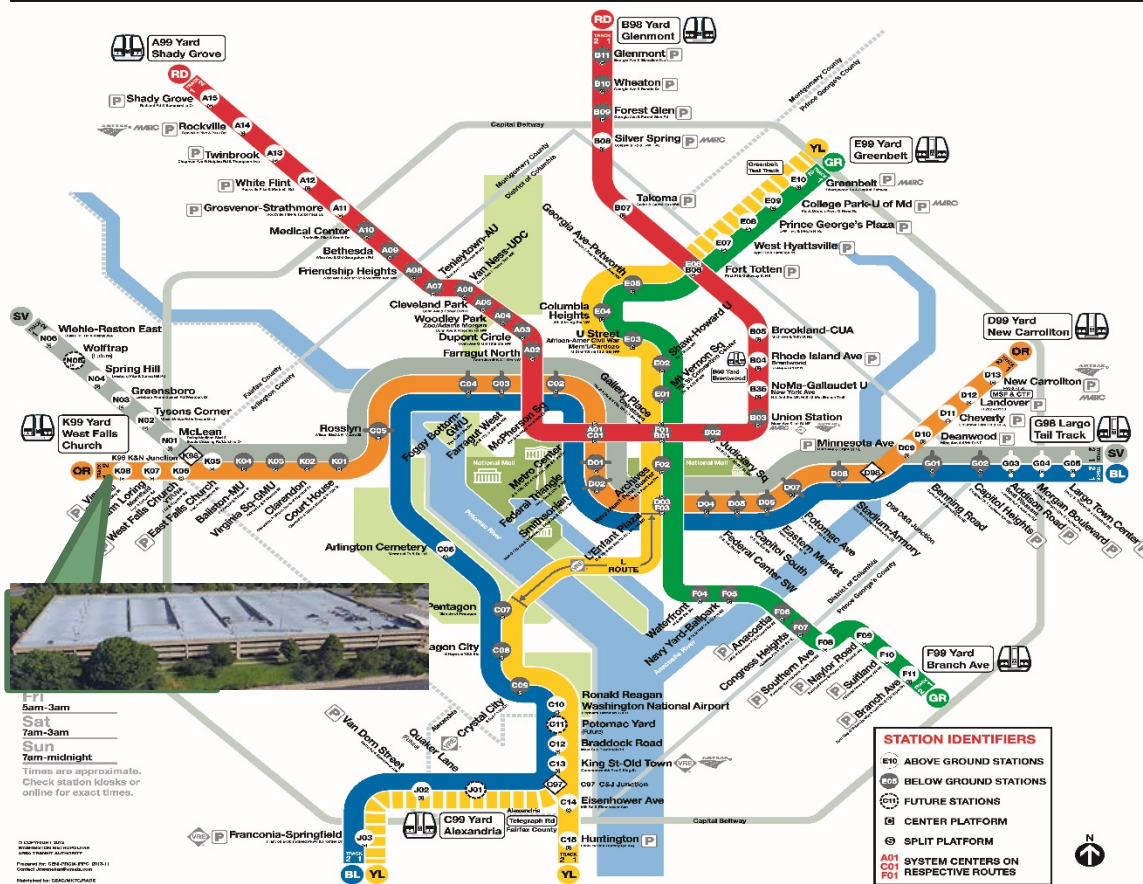


wmata.com
Customer Information Service: 202-637-7000
TTY Phone: 202-638-3750

Legend

- RD Red Line • Glenmont to Shady Grove
- OR Orange Line • New Carrollton to Vienna
- BL Blue Line • Franconia-Springfield to Largo Town Center
- GR Green Line • Branch Ave to Greenbelt
- YL Yellow Line • Huntington to Fort Totten
- SV Silver Line • Dulles Corridor Line

Station Features
P Parking
Connecting Rail System
AMTRAK
VIA METRO
MARC



Vienna North Parking Garage

- Located at 9501 Virginia Center Blvd., Fairfax, VA22031, Fairfax County Virginia
- The parking garage serves the Vienna Metro station located on the Orange line.
- The garage structure consists of a ground level and five (5) elevated levels of car parking.
- The parking garage has an area of 552,000 sf and was constructed in 2004.



FQ18064 – Rehabilitation of Parking Garages at Largo Town Center North, Largo Town center South, New Carrollton, Vienna North, West Falls Church and White Flint



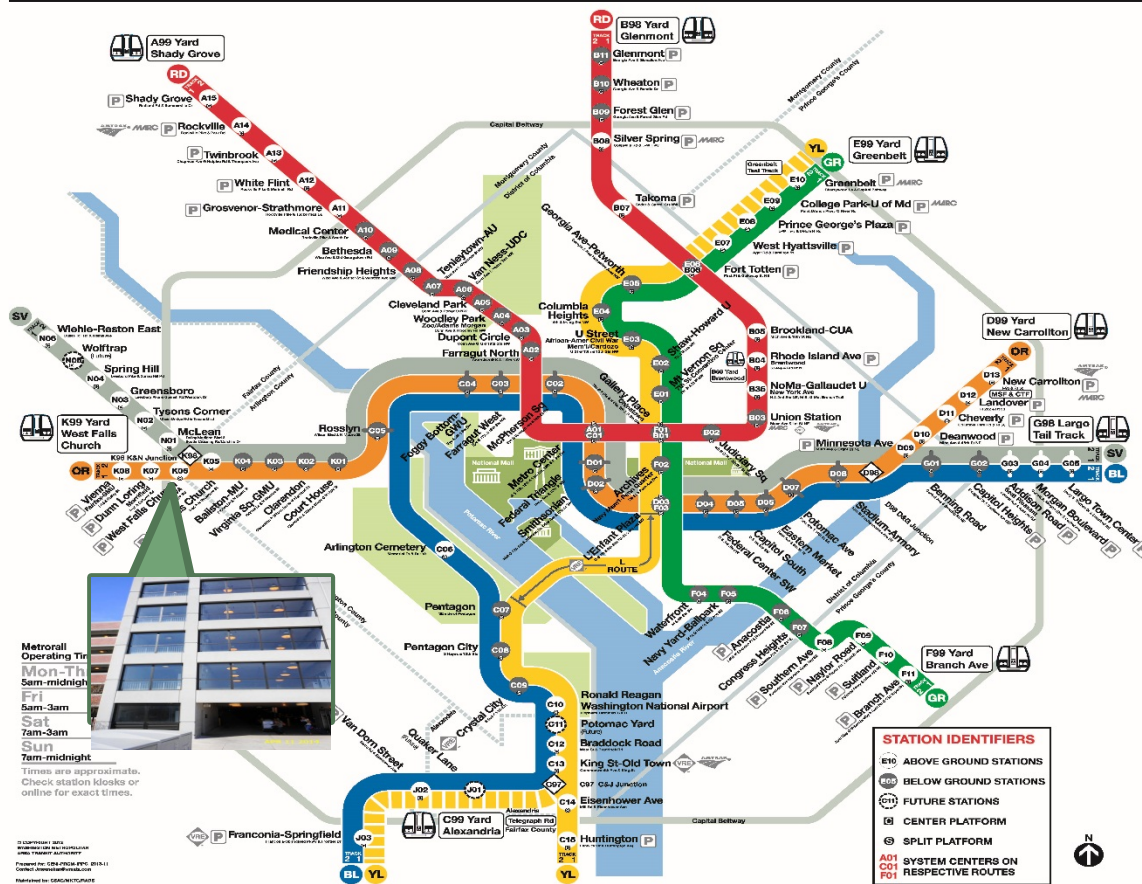
wmata.com
Customer Information Service: 202-637-7000
TTY Phone: 202-638-3750

Legend

- RD Red Line • Glenmont to Shady Grove
- OR Orange Line • New Carrollton to Vienna
- BL Blue Line • Franconia-Springfield to Largo Town Center
- GR Green Line • Branch Ave to Greenbelt
- YL Yellow Line • Huntington to Fort Totten
- SV Silver Line • Dulles Corridor Line

Station Features
P Parking
Connecting Rail System
AMTRAK
VIRGINIA
METRO

Under Construction
Full-Time Service
Station in Service
Transfer Station
Rush-Only Service:
Monday-Friday
6:30am - 8:00am
3:30pm - 6:00pm



West Falls Church Parking Garage

- Located at 7040 Haycock Road, Falls Church, VA 22043 Virginia.
- The parking garage serves the West falls Church Metro Station located on the Orange and Silver lines.
- The garage structure consists of a ground level and five (5) elevated levels of car parking.
- The parking garage has an area of 395,000 sf.



FQ18064 – Rehabilitation of Parking Garages at Largo Town Center North, Largo Town center South, New Carrollton, Vienna North, West Falls Church and White Flint

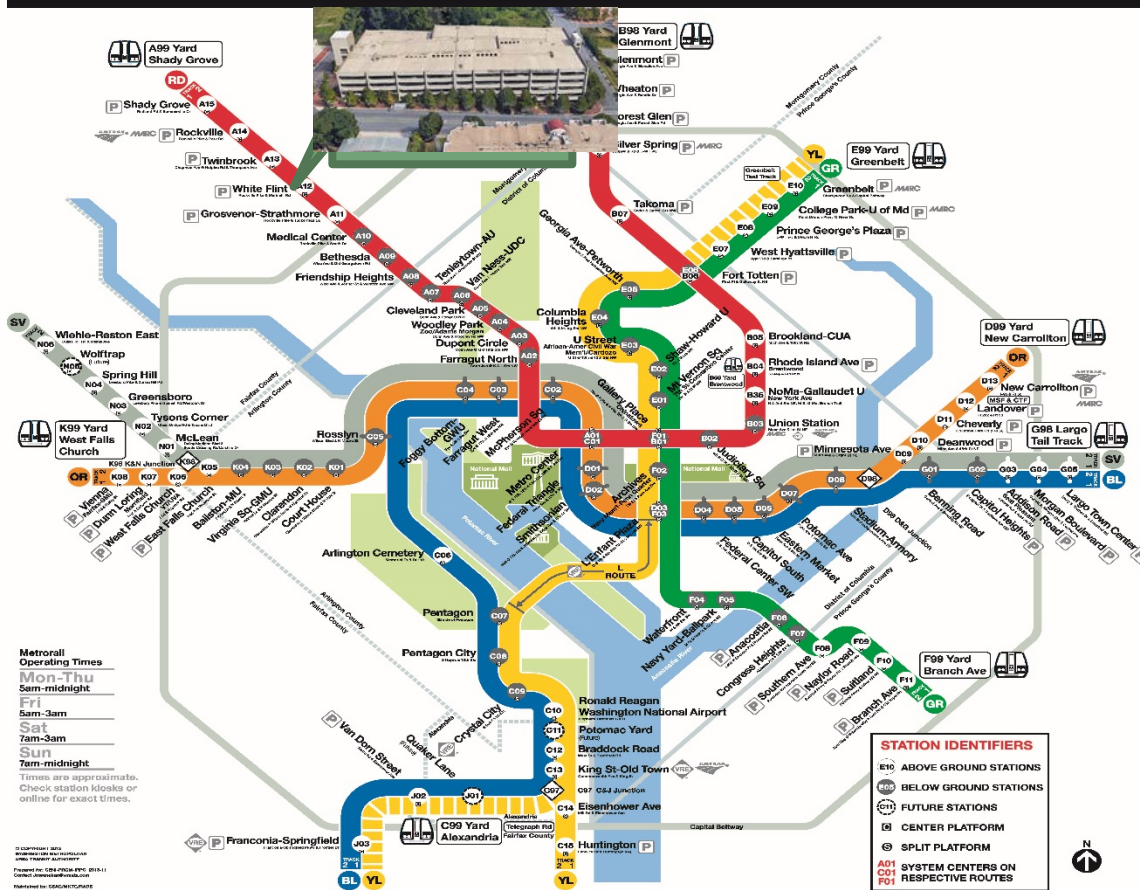


wmata.com
Customer Information Service: 202-637-7000
TTY Phone: 202-638-3750

Legend

- RD Red Line • Glenmont to Shady Grove
- OR Orange Line • New Carrollton to Vienna
- BL Blue Line • Franconia-Springfield to Largo Town Center
- GR Green Line • Branch Ave to Greenbelt
- YL Yellow Line • Huntington to Fort Totten
- SV Silver Line • Dulles Corridor Line

Station Features
[P] Parking
Connecting Rail System
AMTRAK
VIA METRO
MARC



Metrolink
Operating Times
Mon-Thru
5am-midnight
Fri
5am-3am
Sat
7am-3am
Sun
7am-midnight

Times are approximate.
Check station kiosks or
online for exact times.

©2011 WMATA
All rights reserved.
Printed by WMATA
Contact: info@wmata.com

STATION IDENTIFIERS

- E10 ABOVE GROUND STATIONS
- B10 BELOW GROUND STATIONS
- FUTURE STATIONS
- CENTER PLATFORM
- SPLIT PLATFORM
- A01 C01 F01 SYSTEM CENTERS ON RESPECTIVE ROUTES

- Located at 5500 Marinelli Road, Rockville, MD 20852 Prince George's County.
- The parking garage serves the White Flint Metro Station located on the Red line.
- The garage structure consists of a ground level and five (5) elevated levels of car parking.
- The parking garage has an approx.. area of 390,345 sf and was constructed in 2004.

Parking Garages Location and Description



Largo town Center
(North & South)
Parking Garage



New Carrollton
Parking Garage



Vienna North
Parking Garage



West Falls Church
Parking Garage



White Flint
Parking Garage



FQ18064 – Rehabilitation of Parking Garages at Largo Town Center North, Largo Town Center South, New Carrollton, Vienna North, West Falls Church and White Flint



Typical Rehabilitation Requirements

The rehabilitation of all Six parking garages consists (but not limited to) of the following:

- ◉ Waterproofing of all elevated decks.
- ◉ Replacement of expansion and construction joints.
- ◉ Repair of concrete spalls at top and underside of decks.
- ◉ Repair of concrete cracks at top and underside of decks, columns, beams, corebell.
- ◉ Repair/Replacement of deck drainage system.
- ◉ Cleaning and painting of fire lines and wash down piping.
- ◉ Removal and new application of striping at all parking levels.
- ◉ Renovation of stairwells, painting of railings, nosing replace
- ◉ Apply Traffic Bearing Membrane (TBM) at roof level
- ◉ Replacement or cleaning of electrical conduits and components.

Typical Expansion Joint to Be Repaired



Largo Town Center
(North & South)
Parking Garage



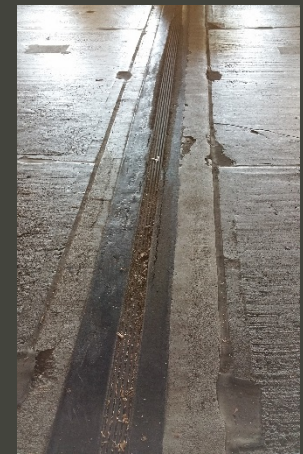
New Carrollton
Parking Garage



Vienna North
Parking Garage



West Falls Church
Parking Garage



White Flint
Parking Garage

Typical Joint to Be Repaired



Largo Town
center(North &
South) Parking
Garage



New Carrollton
Parking Garage



Vienna North
Parking Garage



West Falls
Church Parking
Garage

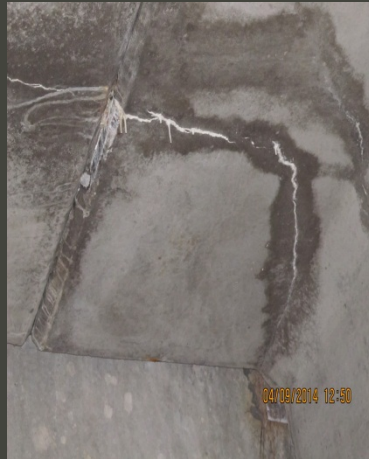


White Flint
Parking Garage

Typical Concrete Cracks to Be Repaired



Largo Town Center (North & South) Parking Garage



New Carrollton Parking Garage



Vienna North Parking Garage



West Falls Church Parking Garage

White Flint Parking Garage



FQ18064 – Rehabilitation of Parking Garages at Largo Town Center North & Largo Town Center South, New Carrollton, Vienna North, West Falls Church and White Flint

Program Schedule Requirements

- Bar charts are required in Primavera Software (P6 or Compatible)



Receipt of Written Questions

The Authority will issue an amendment as required.

QUESTIONS ?





Site Visit at Largo Town Center Parking Garage after Pre-bid conference

